

Sew Me Something

Pattern Cutting Series - Two Piece Dress Block

The two piece dress block is useful if you want to have a waist seam. This will allow you to create different skirt shapes and potentially achieve a better fit through the waist. You will need to drop the front bodice slightly to allow more room to move.

The Two Piece Dress Block Instructions

Figure 1.

Trace off the one piece dress block and draw in the waistline.

Figure 2

Separate the bodice from the skirt sections.

Bodice -

Drop the centre front waist point down by 1- 1.5cm to point B

Redraw the waistline with a slight curve from A at the centre back to B at the centre front.

You may find it easier to pleat out the waist darts and line the bodice up at the side seams to create a smooth curve.

Skirt -

Raise side waist points at C and D by 1.25 - 1.5cm.

Redraw the waist line with a slight curve.

You may find it easier to pleat out the waist darts and line the skirt up at the side seams to create a smooth curve.

Draw around the front and back bodice and skirt outlines.

Trace off the front and back two piece dress blocks.

Sew Me Something

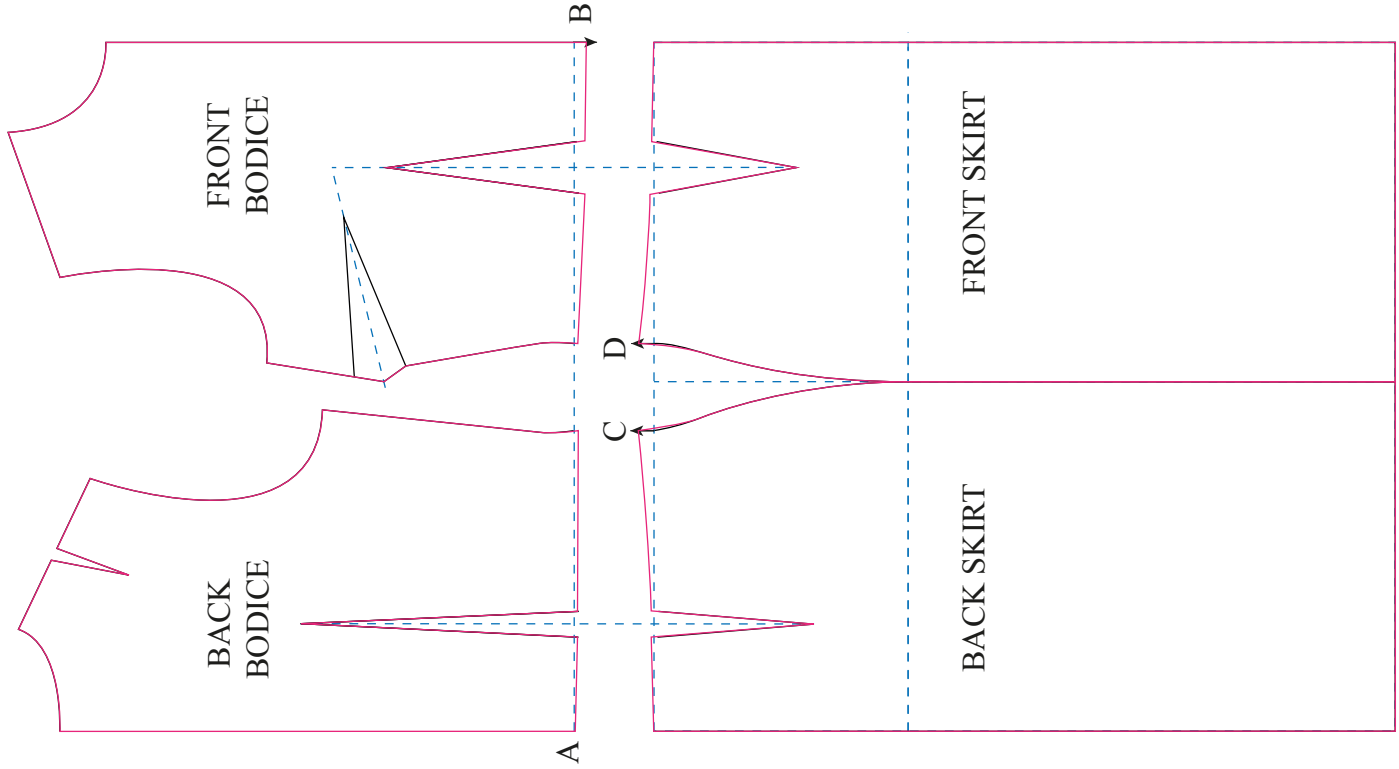


Figure 2

Two Piece Dress Block

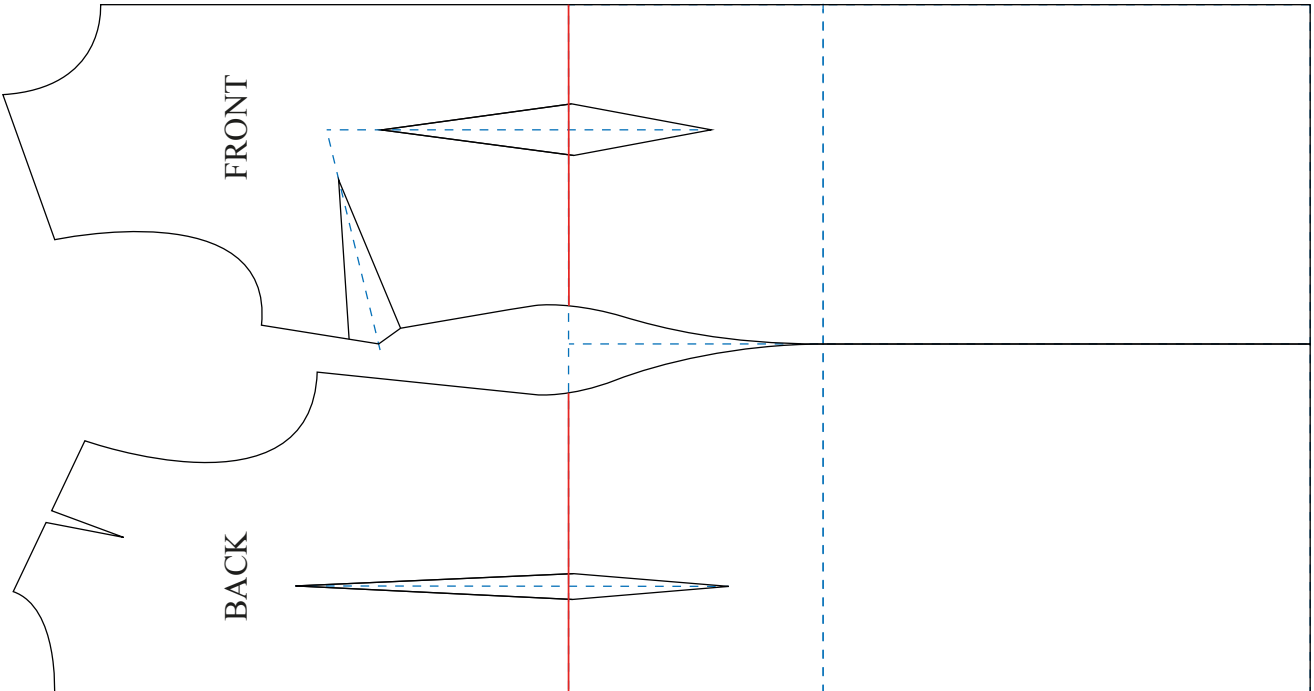


Figure 1

Sew Me Something